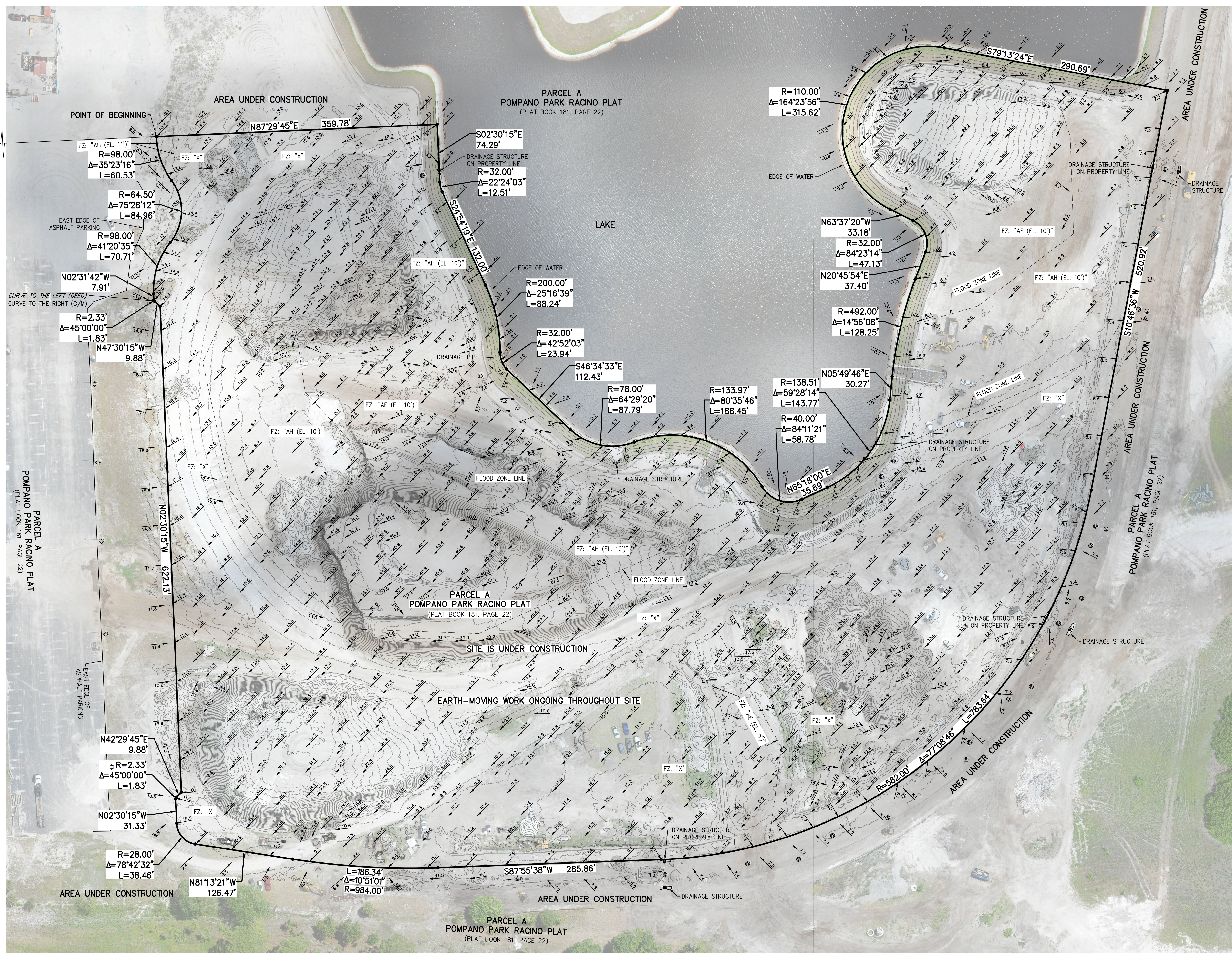
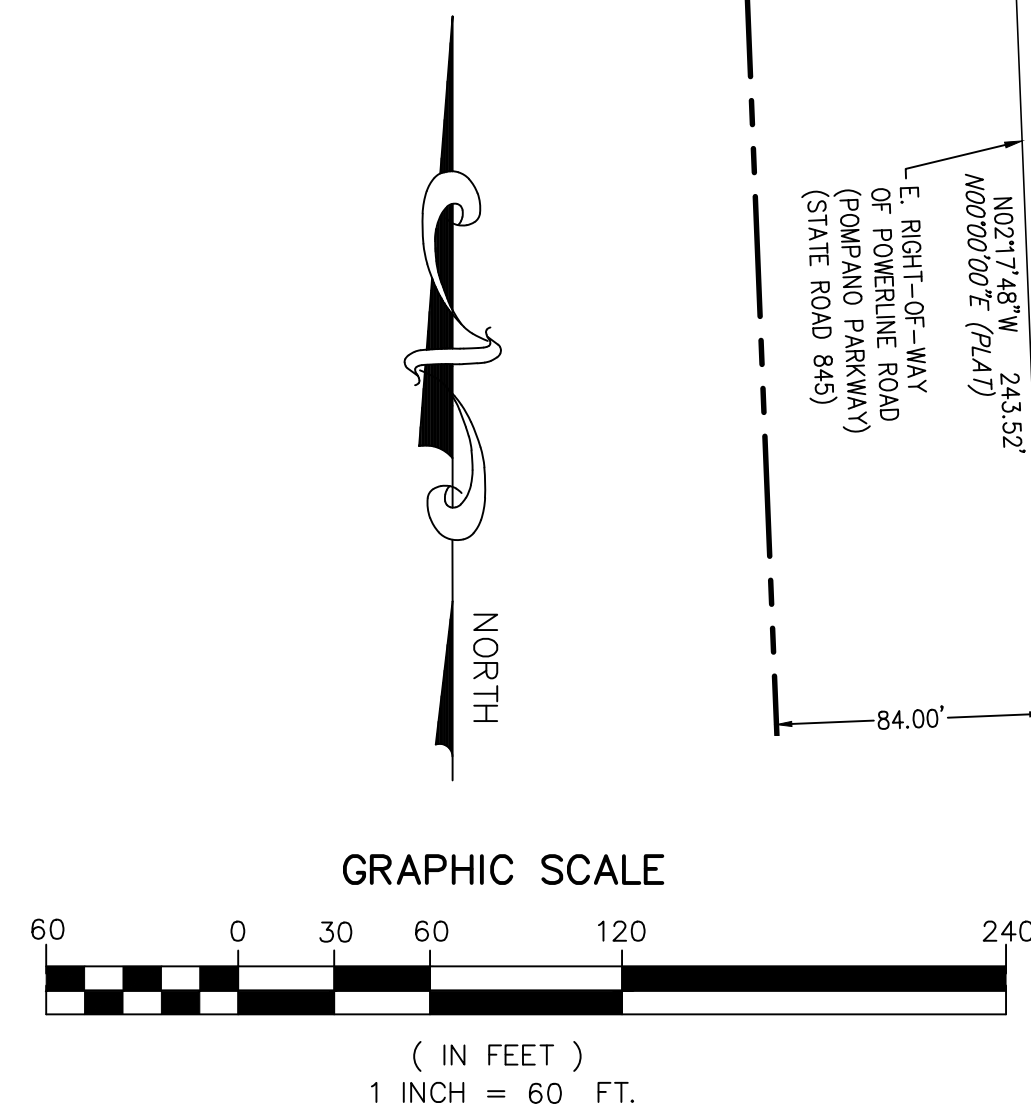


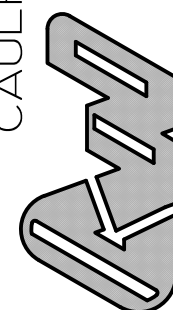
- R - RADIUS
- Δ - DELTA (CENTRAL ANGLE)
- L - ARC LENGTH
- B.C.R. - BROWARD COUNTY RECORD
- C/M - CALCULATED AND MEASURED
- F.Z. - FLOOD ZONE
- I.R./CAP - IRON ROD & CAP
- O.R.B. - OFFICIAL RECORD BOOK
- P.B. - PLAT BOOK
- P.B. - POINT OF BEGINNING
- P.C. - POINT OF COMMENCEMENT
- PG. - PAGE
- ☼ - LIGHT POLE
- ▣ - CATCH BASIN
- Ⓢ - SANITARY MANHOLE
- Ⓢ - DRAINAGE MANHOLE
- ⑤ - EXISTING ELEVATION

After DRC Meeting

DRC comments
submission of a
Permit Application.

[illegible]

W CAULFIELD & WHEELER, INC.
CIVIL ENGINEERING
LANDSCAPE ARCHITECTURE - SURVEYING
7900 GLADES ROAD - SUITE 100
BOCA RATON, FLORIDA 33434
PHONE (561)-392-1991 / FAX (561)-750-1452



CORDISH SITE
POMPANO BEACH, BROWARD COUNTY, FLORIDA
ALTA/NSPS LAND TITLE SURVEY

DATE	6/7/2024
DRAWN BY	RW
F.B./ PG.	HDS
SCALE	1"=60'

JOB # 10940
SHT.NO. 2
OF 2 SHEETS